



Cabo Ella Group

Sample 279-020422-254

D9/HHC Cinnamon Toast White Chocolate

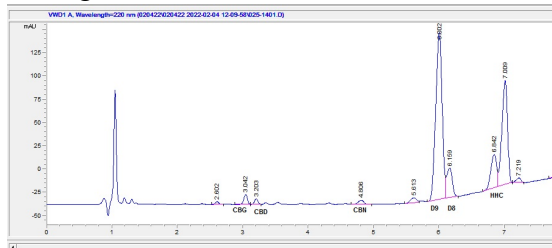
Sample Submitted: 02-04-2022; Report Date: 02-06-2022

nullSample Unit Size: 6.18 g

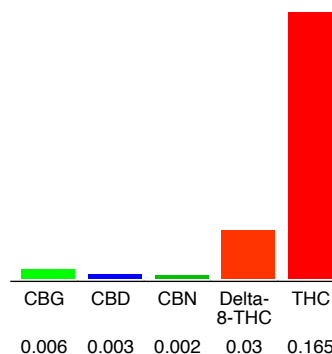
D9/HHC Cinnamon Toast White Chocolate

Edible: Candy

Chromatogram



Cannabinoid Profile



Cannabinoid Profile by HPLC

0.17%

Calculated THC Yield

0.00%

Calculated CBD Yield

0.21%

Total Cannabinoids

Cannabinoid	% wt	mg/unit
CBG	0.006	0.3706
CBD	0.003	0.1853
CBN	0.002	0.1235
Delta-8-THC	0.03	1.853
THC	0.165	10.19
Total Cannabinoids	0.21	12.7
Calculated THC Yield	0.17	10.19
Calculated CBD Yield	0.00	0.19

Calculated Maximum THC Yield = $\text{THC} + 0.877 * \text{THCA}$ Calculated Maximum CBD Yield = $\text{CBD} + 0.877 * \text{CBDA}$

Notes: HHC 0.24(14.8mg) based on chromatogram; no reference standard is available.

Marin Analytics, LLC
250 Bel Marin Keys Blvd, Suite D4
Novato, CA 94949

415-936-6477 / sarabiancalana1@gmail.com

Sara Biancalana
Sara Biancalana
Chief Scientist

This sample has been tested by Marin Analytics, LLC using valid testing methodologies and a quality system. Values reported relate only to the sample tested. Marin Analytics, LLC makes no claims as to the efficacy, safety or other risks associated with any detected or non-detected levels of any compounds reported herein. This Certificate shall not be reproduced except in full, without the written approval of Marin Analytics, LLC.



Cabo Ella Group

Sample 279-020422-255

D9/HHC Strawberry Shortcake White Chocolate

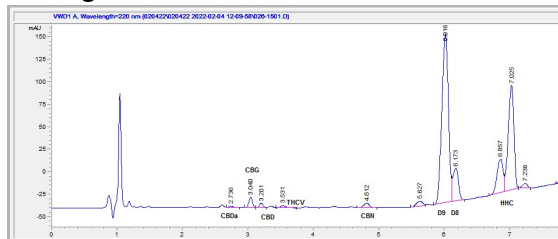
Sample Submitted: 02-04-2022; Report Date: 02-06-2022

nullSample Unit Size: 5.28 g

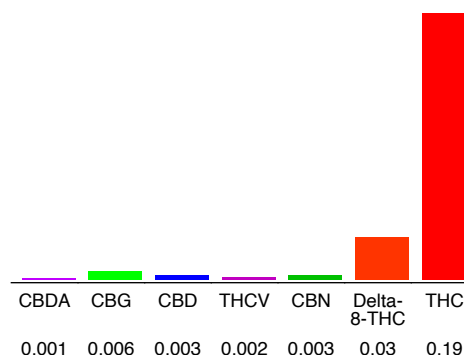
D9/HHC Strawberry Shortcake White Chocolate

Edible: Candy

Chromatogram



Cannabinoid Profile



Cannabinoid Profile by HPLC

0.19%

Calculated THC Yield

0.00%

Calculated CBD Yield

0.24%

Total Cannabinoids

Cannabinoid	% wt	mg/unit
CBDA	0.001	0.05284
CBG	0.006	0.317
CBD	0.003	0.1585
THCV	0.002	0.1057
CBN	0.003	0.1585
Delta-8-THC	0.03	1.585
THC	0.19	10.04
Total Cannabinoids	0.24	12.4
Calculated THC Yield	0.19	10.04
Calculated CBD Yield	0.00	0.20

Calculated Maximum THC Yield = $\text{THC} + 0.877 * \text{THCA}$ Calculated Maximum CBD Yield = $\text{CBD} + 0.877 * \text{CBDA}$

Notes: HHC 0.28(14.8mg) based on chromatogram; no reference standard is available.

Marin Analytics, LLC

250 Bel Marin Keys Blvd, Suite D4
Novato, CA 94949

415-936-6477 / sarabiancalana1@gmail.com

Sara Biancalana
Chief Scientist

This sample has been tested by Marin Analytics, LLC using valid testing methodologies and a quality system. Values reported relate only to the sample tested. Marin Analytics, LLC makes no claims as to the efficacy, safety or other risks associated with any detected or non-detected levels of any compounds reported herein. This Certificate shall not be reproduced except in full, without the written approval of Marin Analytics, LLC.



Cabo Ella Group

Sample 279-020422-256

D9/HHC Orange Cream White Chocolate

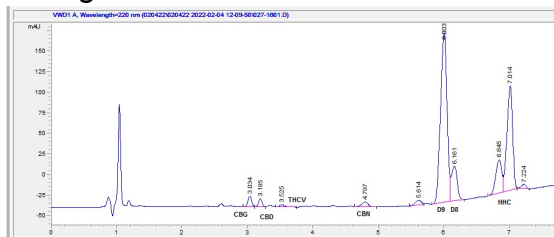
Sample Submitted: 02-04-2022; Report Date: 02-06-2022

nullSample Unit Size: 5.57 g

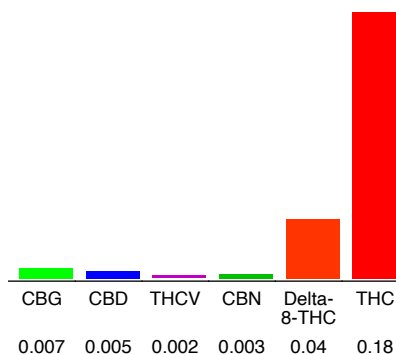
D9/HHC Orange Cream White Chocolate

Edible: Candy

Chromatogram



Cannabinoid Profile



Cannabinoid Profile by HPLC

0.18%

Calculated THC Yield

0.01%

Calculated CBD Yield

0.24%

Total Cannabinoids

Cannabinoid	% wt	mg/unit
CBG	0.007	0.3902
CBD	0.005	0.2787
THCV	0.002	0.1115
CBN	0.003	0.1672
Delta-8-THC	0.04	2.23
THC	0.18	10.03
Total Cannabinoids	0.24	13.2
Calculated THC Yield	0.18	10.03
Calculated CBD Yield	0.01	0.28

Calculated Maximum THC Yield = $\text{THC} + 0.877 \times \text{THCA}$ Calculated Maximum CBD Yield = $\text{CBD} + 0.877 \times \text{CBDA}$

Notes: HHC 0.26(14.5mg) based on chromatogram; no reference standard is available.

Marin Analytics, LLC

250 Bel Marin Keys Blvd, Suite D4
Novato, CA 94949

415-936-6477 / sarabiancalana1@gmail.com

Sara Biancalana
Chief Scientist

This sample has been tested by Marin Analytics, LLC using valid testing methodologies and a quality system. Values reported relate only to the sample tested. Marin Analytics, LLC makes no claims as to the efficacy, safety or other risks associated with any detected or non-detected levels of any compounds reported herein. This Certificate shall not be reproduced except in full, without the written approval of Marin Analytics, LLC.

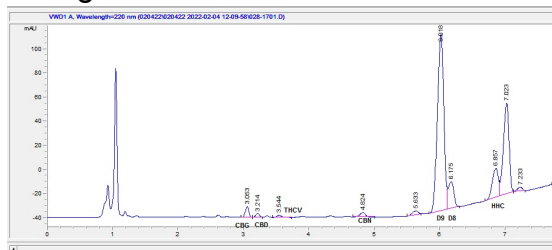
Sample 279-020422-257
D9/HHC Toffee Milk Chocolate
Sample Submitted: 02-04-2022; Report Date: 02-06-2022
nullSample Unit Size: 6.33 g

Cabo Ella Group

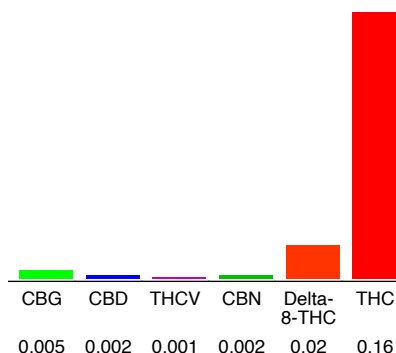
D9/HHC Toffee Milk Chocolate

Edible: Candy

Chromatogram



Cannabinoid Profile



Cannabinoid Profile by HPLC

0.16%

Calculated THC Yield

0.00%

Calculated CBD Yield

0.19%

Total Cannabinoids

Cannabinoid	% wt	mg/unit
CBG	0.005	0.3167
CBD	0.002	0.1267
THCV	0.001	0.06333
CBN	0.002	0.1267
Delta-8-THC	0.02	1.267
THC	0.16	10.13
Total Cannabinoids	0.19	12.0
Calculated THC Yield	0.16	10.13
Calculated CBD Yield	0.00	0.13

Calculated Maximum THC Yield = THC + 0.877 * THCA

$$\text{Calculated Maximum CBD Yield} = \text{CBD} + 0.877 * \text{CBDA}$$

Notes: HHC 0.23(14.6mg) based on percentage in the chromatogram; no reference standard is available.

Marin Analytics, LLC
250 Bel Marin Keys Blvd, Suite D4
Novato, CA 94949

415-936-6477 / sarabiancalana1@gmail.com

Sara Biancalà

Sara Biancalana
Chief Scientist

This sample has been tested by Marin Analytics, LLC using valid testing methodologies and a quality system. Values reported relate only to the sample tested. Marin Analytics, LLC makes no claims as to the efficacy, safety or other risks associated with any detected or non-detected levels of any compounds reported herein. This Certificate shall not be reproduced except in full, without the written approval of Marin Analytics, LLC.